



GAT MONTHLY MEMBERSHIP PROGRESS REPORT

Results as of: 7/31/2022

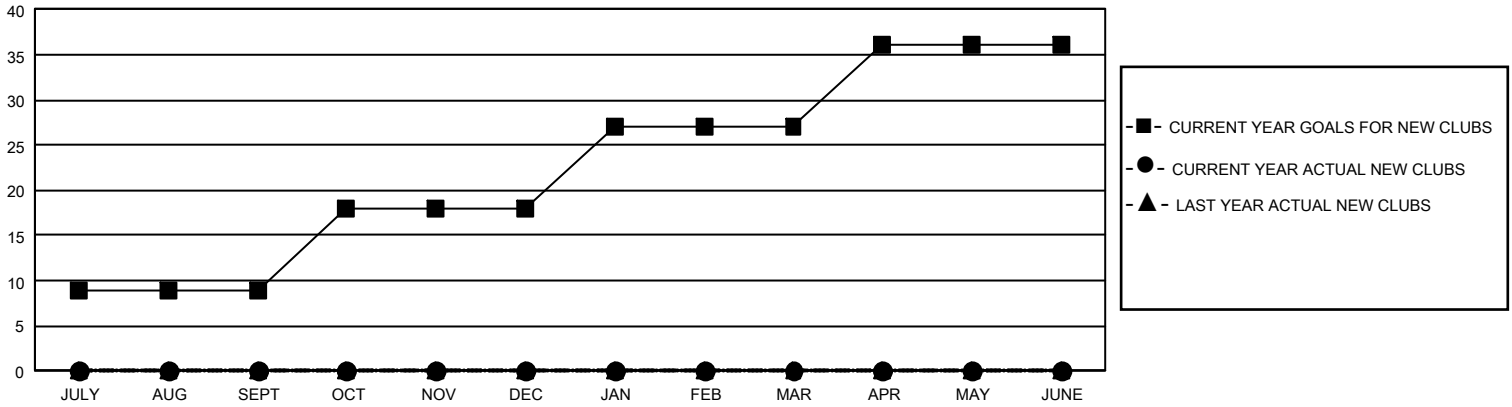
GMT Constitutional Area 5 - C, Group C

REPORT DOES NOT INCLUDE CLUBS IN UNDISTRICTED AREAS.

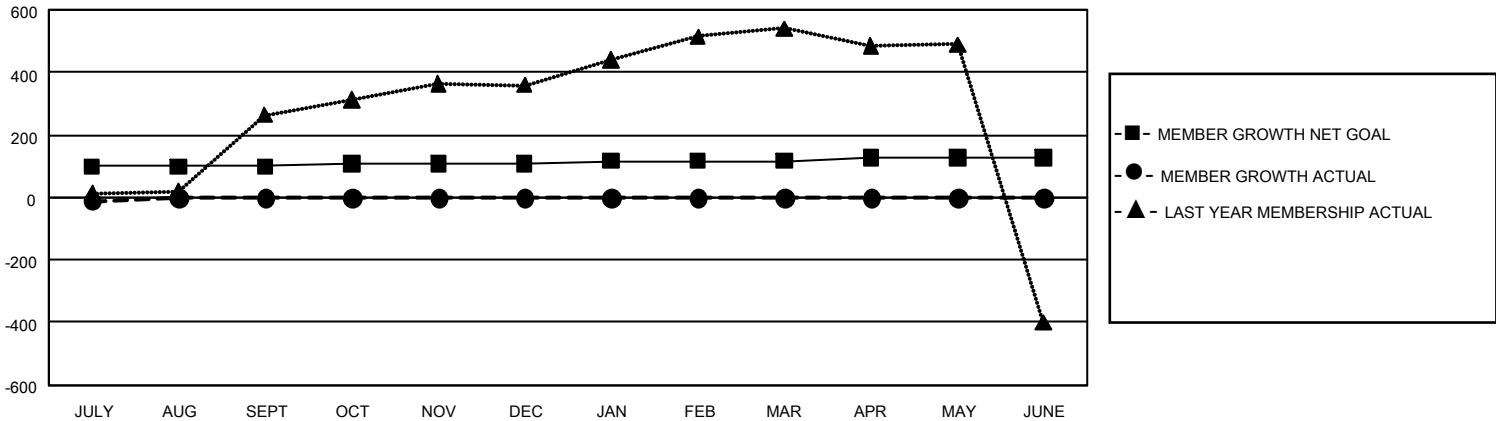
Clubs			
RESULTS FOR 2022-2023			
QUARTER	NEW CLUB GOAL	NEW CLUBS	DROPPED CLUBS
JULY/AUG/SEPT	27	0	0
OCT/NOV/DEC	27	0	0
JAN/FEB/MAR	27	0	0
APR/MAY/JUNE	27	0	0

Members			
RESULTS FOR 2022-2023			
QUARTER	MEMBER GROWTH NET GOAL	MEMBER GROWTH ACTUAL	DROPPED MEMBERS ACTUAL (including transfers)
JULY/AUG/SEPT	99	52	44
OCT/NOV/DEC	9	0	0
JAN/FEB/MAR	9	0	0
APR/MAY/JUNE	9	0	0

GOALS AND ACTUAL NEW CLUBS CUMULATIVE



GOALS AND ACTUAL MEMBERS CUMULATIVE



DROPPED CLUBS: 0	4 CLUBS OF 137 ADDED 1 OR MORE NEW MEMBERS	<u>GENDER DISTRIBUTION</u>	
<u>DROPPED MEMBERS</u>		MALE	1,415 (54.17%)
DECEASED	0	FEMALE	1,197 (45.83%)
CLUB CANCELLED	0	NON BINARY	0 (0.00%)
OTHER	44	PREFER NOT TO ANSWER	0 (0.00%)
TOTAL	44	TOTAL FAMILY UNIT MEMBERS	310
	CLICK HERE FOR CUMULATIVE MEMBERSHIP DATA	FAMILY MEMBERS PAYING HALF DUES	159